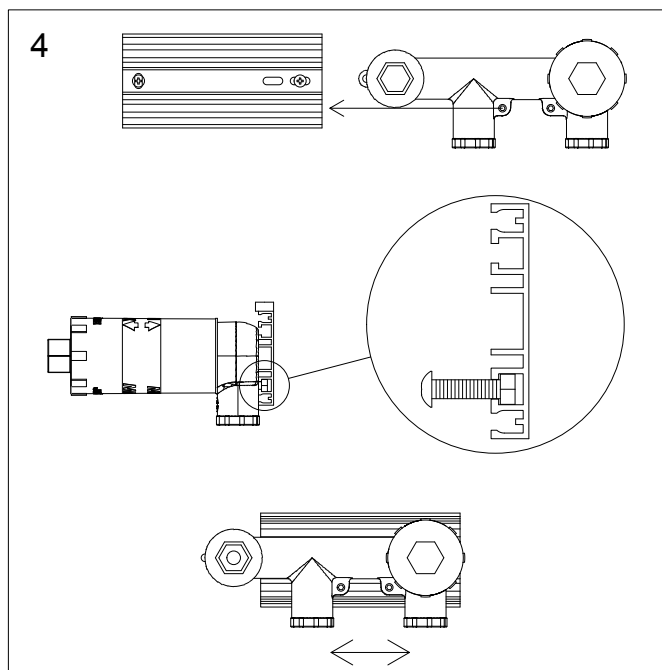
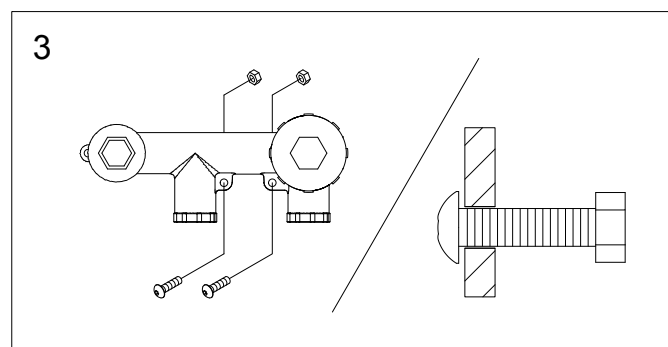
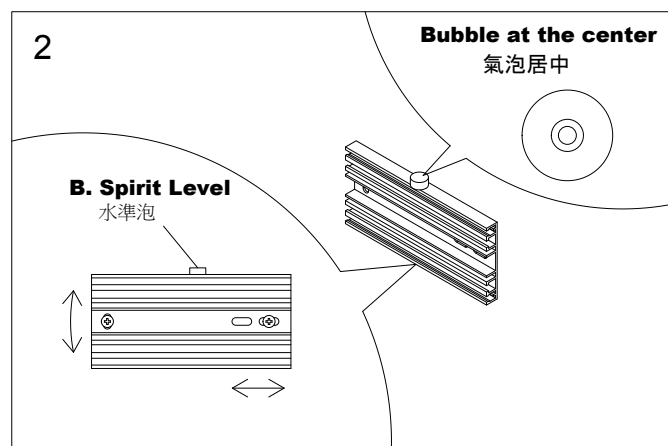
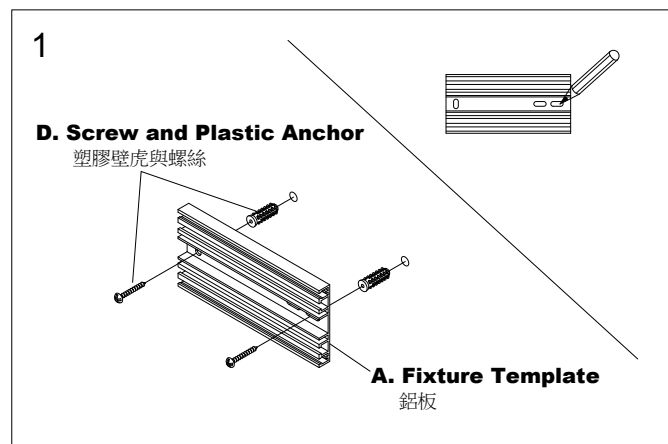


INSTALLATION INSTRUCTIONS

Installation Instruction For Fixture Template of Concealed Valve 閥體固定背板安裝說明



1. Mark at proper positions by the **Fixture Template**. Drill the holes at marked positions to a depth of 40mm by 6mm drill-bit. Insert the **Plastic Anchors** into the holes until flush with finished wall, and then fix the **Fixture Template** on with **Screws** but not tighten them yet.

利用鋁板在想安裝的位置做記號。然後使用6mm鑽頭，鑽孔深度4公分，填入塑膠塞並使之齊平於牆面，將固定基座以螺絲鎖在牆上，先不要鎖到緊。

2. Put the **Spirit Level** on the top of **Fixture Template**, adjust the **Fixture Template** to arrange the bubble at the center position, and then tighten the **Screws** for fixing..

將水準泡放在鋁板上方，調整鋁板，居中水準氣泡，然後才將螺絲鎖緊。

3. Assemble the **Bolts** and **Nuts** on the valve as the figure shows.

將螺絲穿過閥體與螺帽結合，螺帽轉2~3圈就好。

4. Slide the valve to the groove of **Fixture Template** with **Bolts** and **Nuts**, adjust the valve to the proper position, and then tighten the **Bolts** to finish the installation..

如圖所示，沿著鋁板的溝槽，將閥體由側邊滑入鋁板，讓螺帽卡在溝槽中。左右滑動閥體，調整到適當位置後，將螺絲鎖緊即可。

FIXING CONTENTS

組配件內容

A. Fixture Template *1 鋁板	B. Spirit Level *1 水準泡	C. Bolt and Nut *2 螺絲與螺帽	D. Screw and Plastic Anchor *2 塑膠壁虎與螺絲