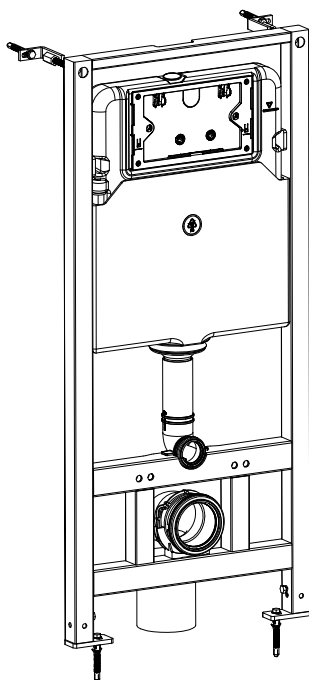


INSTALLATION INSTRUCTIONS

Concealed Cistern 隱藏式水箱安裝說明

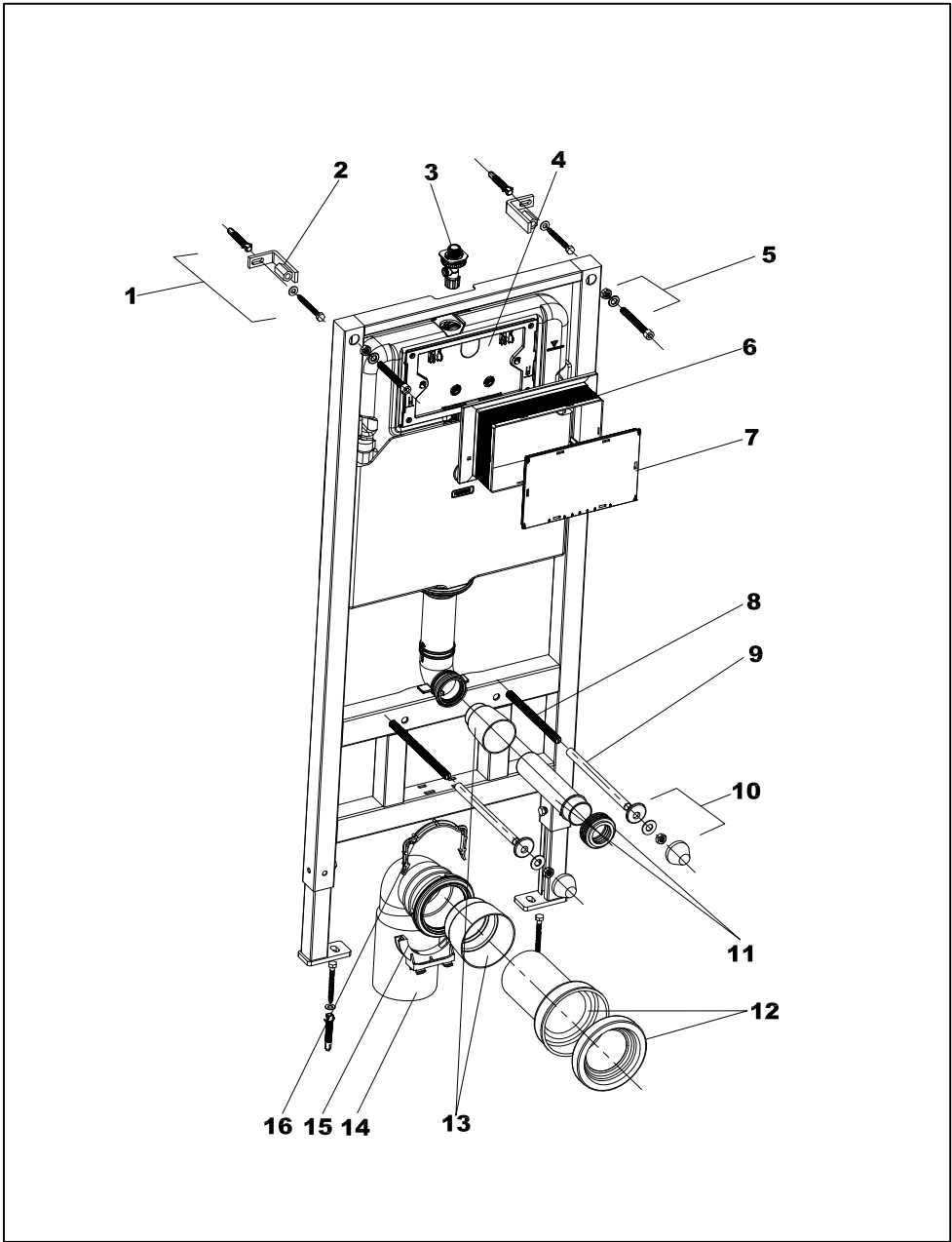
Applicable Product Number:
適用產品型號:



6373-02-8000

FIXING CONTENTS

組配件內容



FIXING CONTENTS

組配件內容

	Description 名稱	Qty 數量	Function 用途
1	Expansion screw 膨脹螺釘組	4	Mounting of frame and wall bracket. 固定鐵架及鐵架固定彎角用
2	Wall bracket 鐵架固定彎角	2	Fixation of frame. 固定鐵架用
3	Angle valve 調節閥	1	Fill valve inlet and shut-off. 進水閥進止水開關
4	Cistern cover 水箱蓋板	1	Airproof tank and mounting of locking bracket. 固定支架組及密封水箱用
5	Socket head screw 內六角螺釘組	2	Mounting of frame and locking into wall bracket. 將鐵架鎖緊在鐵架固定彎角用
6	Plastic holder 安裝盒	1	To reserve space for installation of actuator at wall building. 砌牆時為面板的安裝預留空間用
7	Plastic holder cover 安裝盒端蓋	1	To prevent dust and impurities into tank at wall building. 砌牆時防止灰塵等髒物進入水箱
8	Connecting screw 連接螺栓	2	To mount toilet. 固定座便器用
9	Protective cover 保護套	2	To protect connecting screw at wall building. 砌牆時保護連接螺栓用
10	Ceramic bowl fixing accessories 座便器固定零件組	2	To mount toilet. 固定座便器用
11	Straight tube 沖刷直管件	1	To joint cistern into toilet. (cutting in accordance with wall thickness)
12	Connecting pipe 排污連接管件	1	用於座便器與水箱配件的連接 (依據牆面厚度進行裁割)
13	Piping stopper 彎管堵頭	2	To reserve space for straight tube and connecting pipe. 砌牆時為沖刷直管和排污連接管預留空間用
14	Draining syphon 排污彎管	1	To discharge liquid and solid waste from toilet. 座便器污水排放管道
15	Mounting bracket 固定架	1	To mount draining syphon
16	Draining syphon holder 卡箍	1	固定排污彎管用


INSTALLATION NOTE

安裝注意事項

IMPORTANT INSTRUCTION:

1. Please adhere to the following installation instructions. We shall not be responsible for failures and loss that are contributed to improper installation.
2. Please confirm the fixation location of the frame prior to installation and obtain the finished floor surface. Draw **FFL** on installation wall and follow it as a baseline from ZERO (0) level.
3. The instructions have been composed based on the latest product specifications. We reserve the right to make modifications to the packaging and specifications without providing prior notice.


NOTES:

1. Mount before bricks building.
2. All sizes are shown in mm.
3. Follow the material product, the drawing is for reference only.
4. Finished Floor.  FFL $\frac{0}{\nabla}$ = FINISHED FLOOR

重要提示:

1. 安裝前請仔細閱讀說明書,本公司不承擔因安裝人員未按說明書要求施工所造成的損失.
2. 在鐵架安裝前,先確認安裝位置,並根據室內裝修的總體策劃,確定裝修完成後的地板面,並在安裝牆上劃出**FFL**線,並始終以此作為高度0的基準線.
3. 所有資料是按出版時的最新產品資料編寫,本公司保留在任何時候不需通知便可更改產品的特徵,包裝或供應產品的權利.

注意事項:

1. 請在貼瓷磚之前安裝本產品
2. 所有的尺寸單位為毫米(mm)
3. 圖示零件若與實物不符,請以實物為準;
4.  FFL $\frac{0}{\nabla}$ = 工程完工後的地板面

INSTALLATION INSTRUCTIONS

安裝說明

* Drainage System Layout:

Drawings 1, 2 and 3 show different installation systems for drain pipe. User shall choose whichever installation system based on the drainage outlet position.

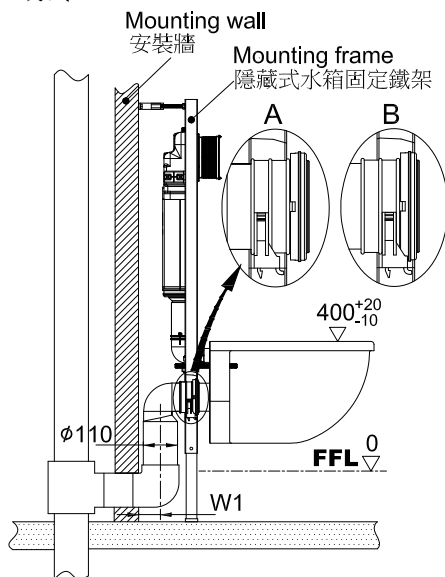
If drainage outlet does not fall within listed three systems, user should follow one of three drainage system layout to correspond installation of our concealed cistern.

* 排水污管道鋪設:

圖1至3為排污管的安裝方式,客戶需依據排污口的位置來具體確定,如果排污口都不是圖示3種方式中的一種,請在安裝前將排污口鋪設成其中的一種方式,以對應本產品排污管的輸出方式.

Drainage System 1

1.方式一



When the drain pipe locates on **A** position, the distance from centre of drain pipe to installation wall (W1) should be 70-100mm.

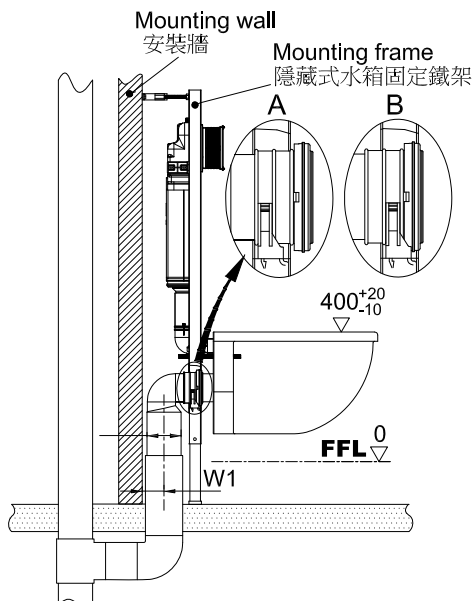
When the drain pipe locates on **B** position, the distance from centre of drain pipe to installation wall (W1) should be 70-80mm.

當排污管處於安裝位置**A**時,要求排水彎管中心到安裝牆面的距離(W1)為70~100mm;

當排污管處於安裝位置**B**時,要求排水彎管中心到安裝牆面的距離(W1)為70~80 mm;

Drainage System 2

2.方式二



When the drain pipe locates on **A** position, the distance from centre of drain pipe to installation wall (W1) should be 70~100mm.

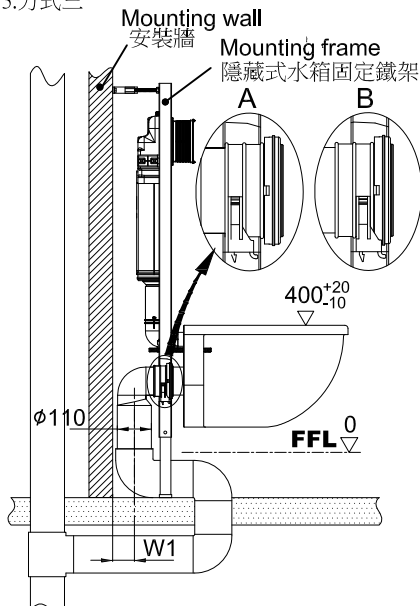
When the drain pipe locates on **B** position, the distance from centre of drain pipe to installation wall (W1) should be 70~80mm.

當排污管處於安裝位置**A**時,要求排水彎管中心到安裝牆面的距離(W1)為70~100mm;

當排污管處於安裝位置**B**時,要求排水彎管中心到安裝牆面的距離(W1)為70~80 mm;

Drainage System 3

3.方式三



When the drain pipe locates on **A** position, the distance from centre of drain pipe to installation wall (W1) should be 70~100mm.

When the drain pipe locates on **B** position, the distance from centre of drain pipe to installation wall (W1) should be 70~80mm.

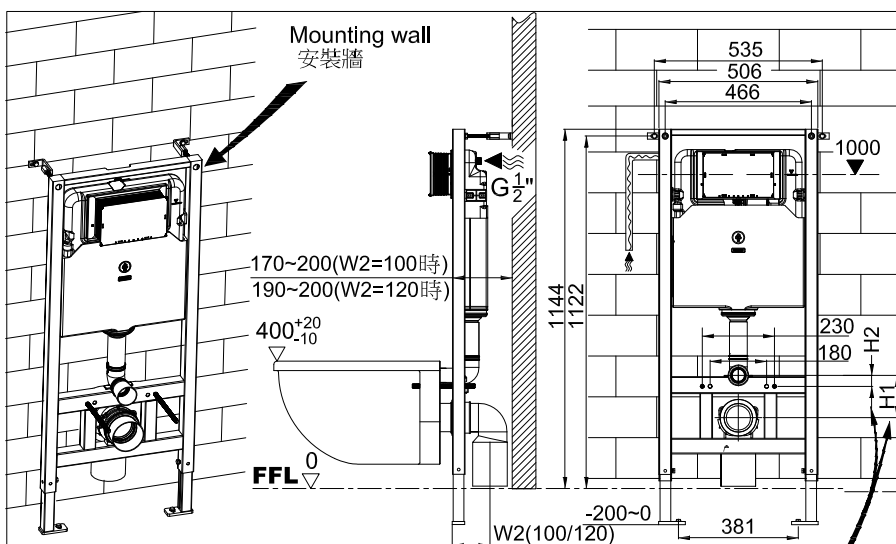
當排污管處於安裝位置**A**時,要求排水彎管中心到安裝牆面的距離(W1)為70~100mm;

當排污管處於安裝位置**B**時,要求排水彎管中心到安裝牆面的距離(W1)為70~80 mm;

3

General dimension and water supply drawing (from cistern top or back)

基本尺寸及供水管道鋪設



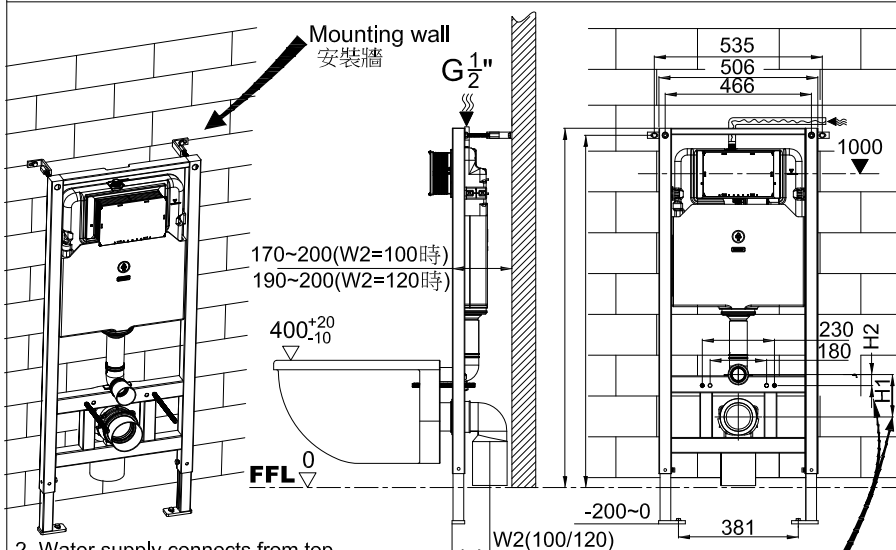
1. Water supply from back.

(water supply should be connected to angle valve inside cistern)

1. 水箱後孔進水(供水管必須接在水箱自帶的調節閥上)

Dimension of H1 & H2 subject to available parts.

H1,H2以出廠時的配件為準



2. Water supply connects from top.

(water supply should be connected to angle valve inside cistern)

2. 水箱頂孔進水(供水管必須接在水箱自帶的調節閥上)

Dimension of H1 & H2 subject to available parts.

H1,H2以出廠時的配件為準

4

Drill holes on the mounting wall and the floor and install expansion screws

在安裝牆面及地面鑽孔並裝入塑膠塞

Theoretical dimension of wall bracket
Outward installation.
鐵架固定彎角朝外安裝時的理論尺寸

Theoretical dimension of wall bracket
Inward installation
鐵架固定彎角朝內安裝時的理論尺寸

FFL

Dimension "a" according to practical location of flushing pipe.
Note: Above drilling are theoretical dimensions of frame mounting. Please follow the practical location of frame.

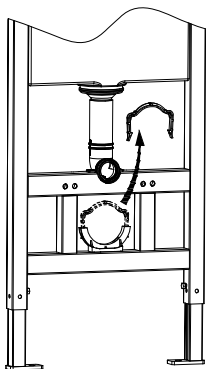
"a"值根據水管的實際位置確定:
提示:圖中鑽孔位置的尺寸為鐵架安裝的理論尺寸,安裝時請根據鐵架的實際安裝位置來確定。

<p>①</p> <p>Drill a hole of $\phi 10 \times 75$ 牆面鑽孔 $\phi 10 \times 75$</p>	<p>②</p> <p>Insert expansion screw 裝入塑膠塞</p>	<p>③</p> <p>Wall bracket can be mounted inwardly and outwardly. (The hole distance will be difference) 鐵架固定彎角可朝內/外側安裝 (內外側安裝時A孔間的距離不同)</p>
<p>①</p> <p>Drill a hole of $\phi 10 \times 75$ 地板鑽孔 $\phi 10 \times 75$</p>	<p>②</p> <p>Insert expansion screw 裝入塑膠塞</p>	<p>Fix the wall bracket on the wall. 將鐵架固定彎角固定在牆面上</p>

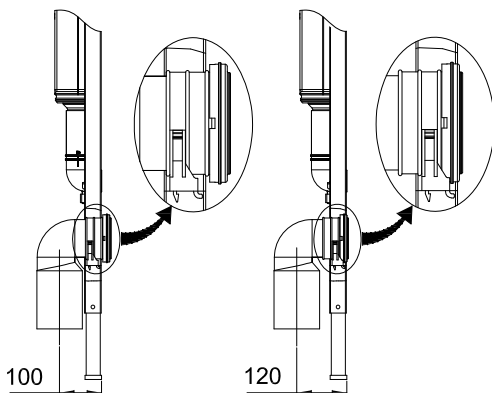
5

Installation of the draining syphon

排水彎管安裝:

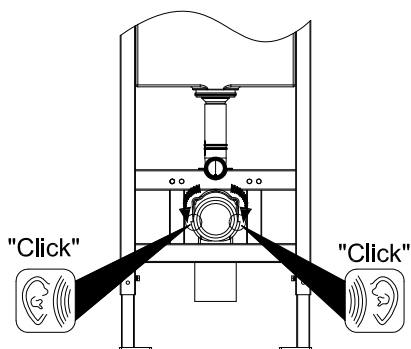


Remove the mounting bracket
取下卡箍



Mount the draining syphon
(installation distance 100 or 120)

裝入排水彎管
(安裝距離100或120)

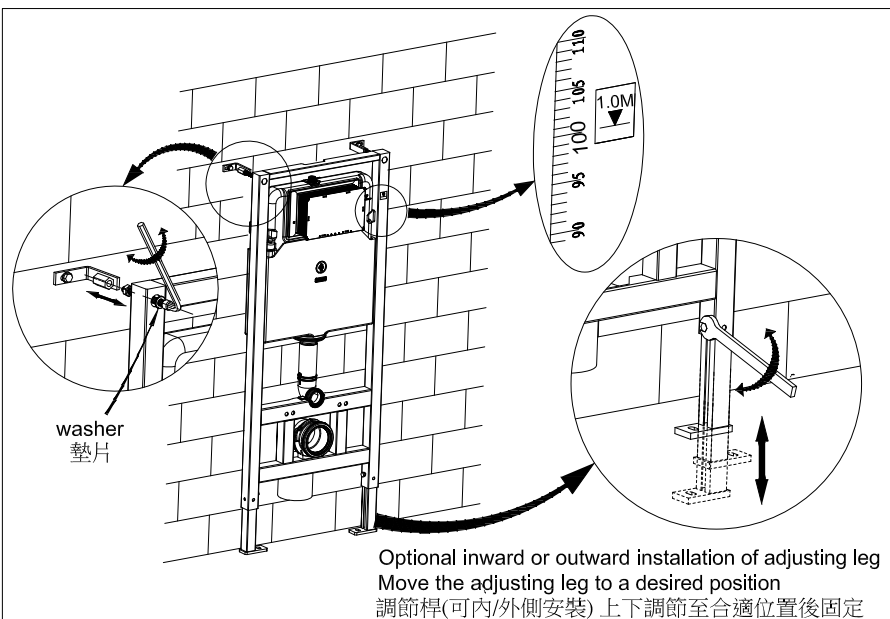


Fasten the mounting bracket
扣上卡箍

6

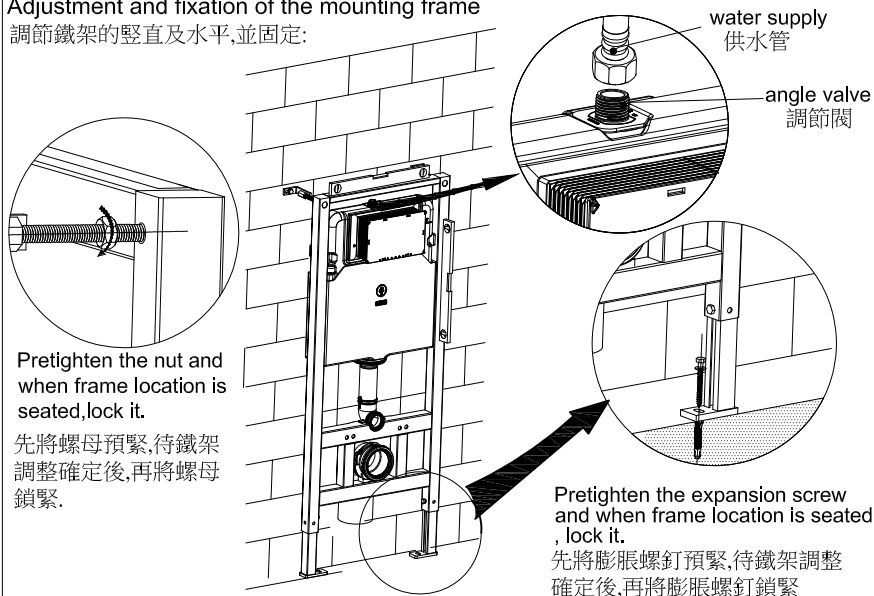
Adjustment of socket head screw and floor fixing accessories

內六角螺栓調節,地腳組裝調節:



Adjustment and fixation of the mounting frame

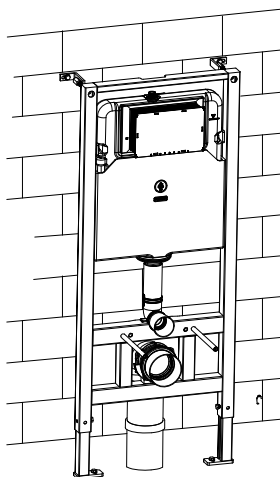
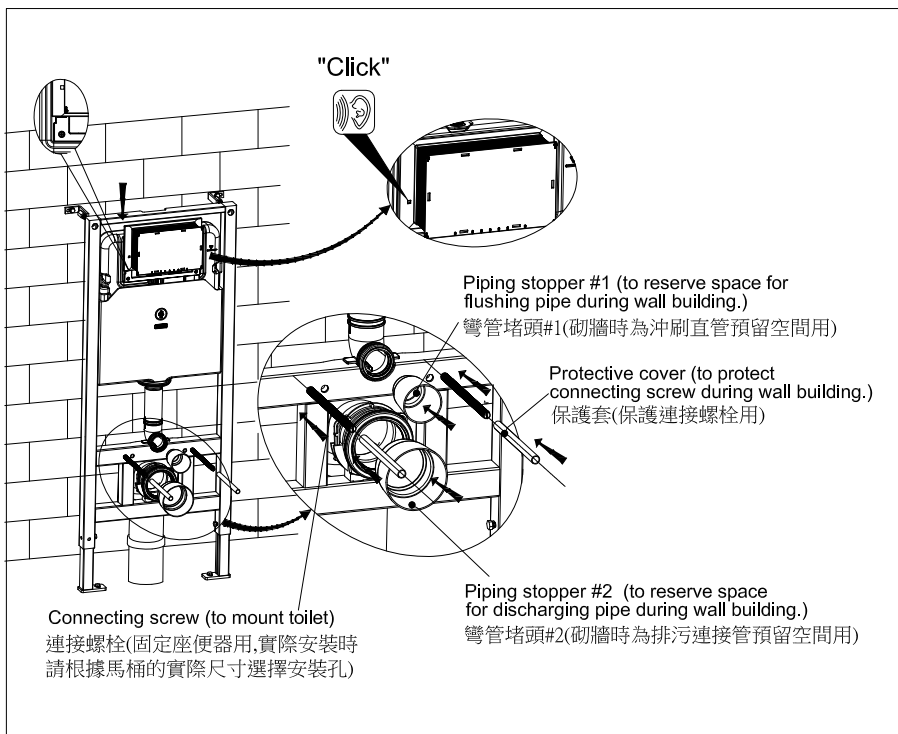
調節鐵架的豎直及水平,並固定:



7

Mounting the installation accessories

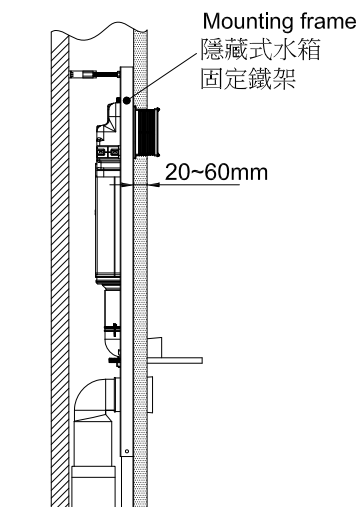
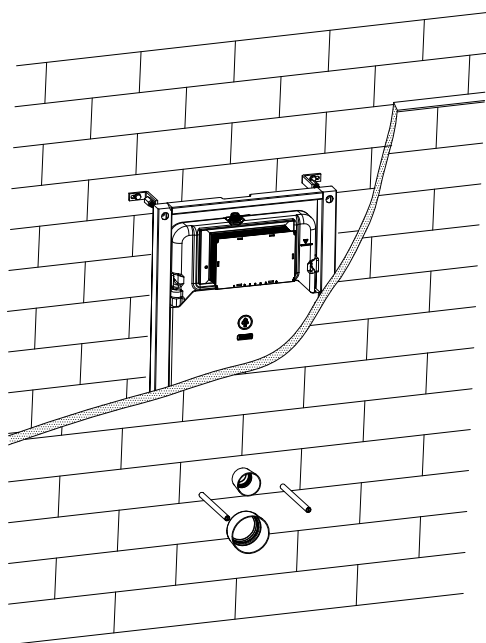
裝修嵌件的安裝:



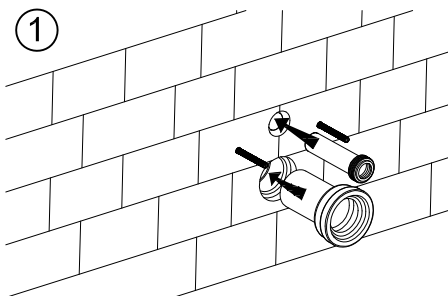
完成示意圖
Finished product.

8

Wall thickness range 20-60mm (from the outside frame surface to the finished wall)
 裝修牆面厚度範圍 20~60mm(從鐵架外面算起至貼磚後完成面)



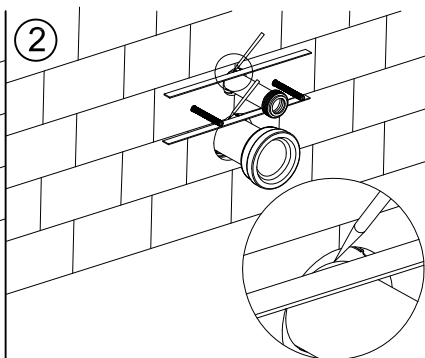
①



Fully insert the straight tube into cistern flushing outlet and connecting pipe into discharging outlet.

將直管和連接管分別插入水箱彎管和排水彎管到位。

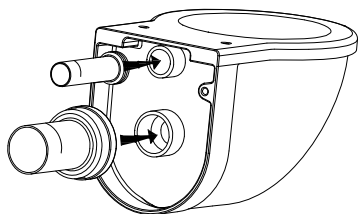
②



Draw the lines as shown above.

如圖劃線標識。

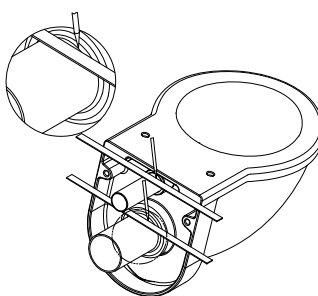
③



Apply lubricant on the rubber washers of the straight tube and connecting pipe, then insert them into ceramic holes.

分別在直管和連接管的橡皮墊上抹上砂油，然後插入座便器。

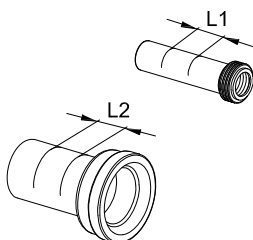
④



Draw the lines as shown above.

如圖劃線標識。

⑤

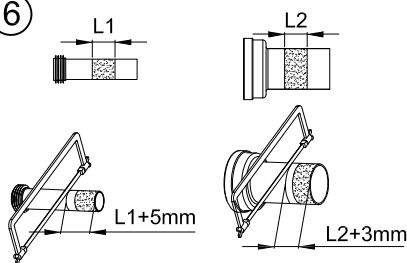


As per drawing, L1 is the distance between two lines on the straight tube.

L2 is the distance between two lines on the connecting pipe.

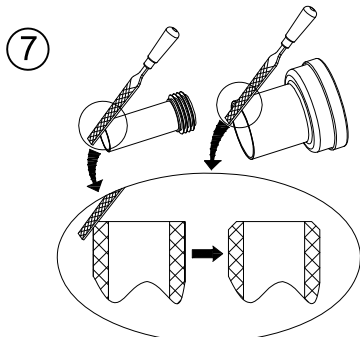
如圖，直管劃線標識之間的距離為L1
連接管劃線標識之間的距離為L2

⑥



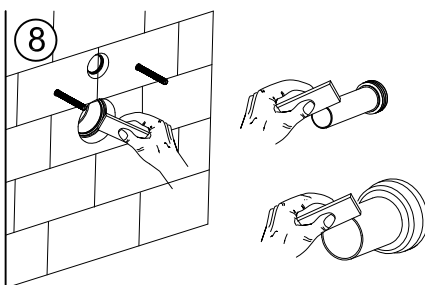
Cut the straight tube and connecting pipe as per above drawing.

在如圖尺寸位置處切割直管和連接管。



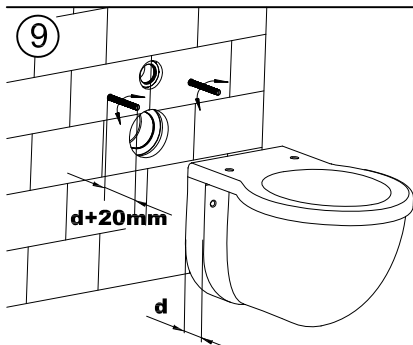
Polish the cutting surface to get chamfer angle and deburring as per drawing.

將鋸短的兩管管口的端面打磨成如圖倒角，並去除毛邊。



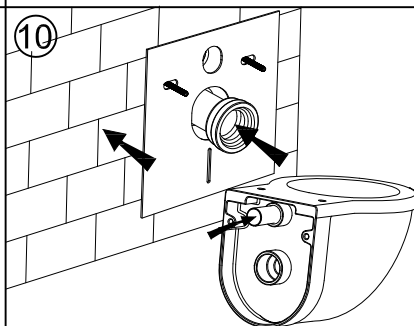
Apply lubricant on joint surface of the straight tube and connecting pipe.

用帶有矽油的海綿的直管與彎管的結合處抹上矽油。



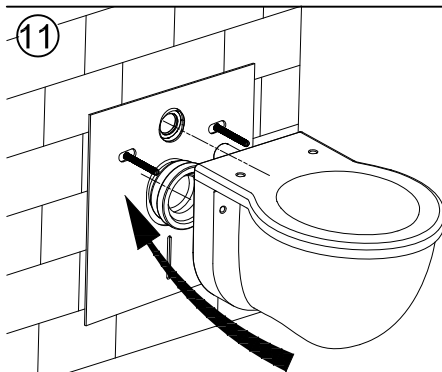
Adjust length of a connecting bolt to be $d+20\text{mm}$

將連接螺栓長度調節到 $d+20\text{mm}$ (如圖)。

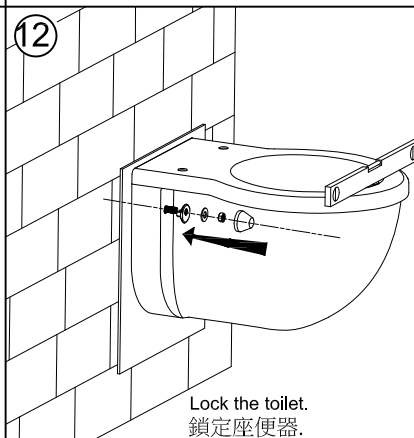


Firstly insert connecting pipe into discharging outlet and straight tube into ceramic hole.

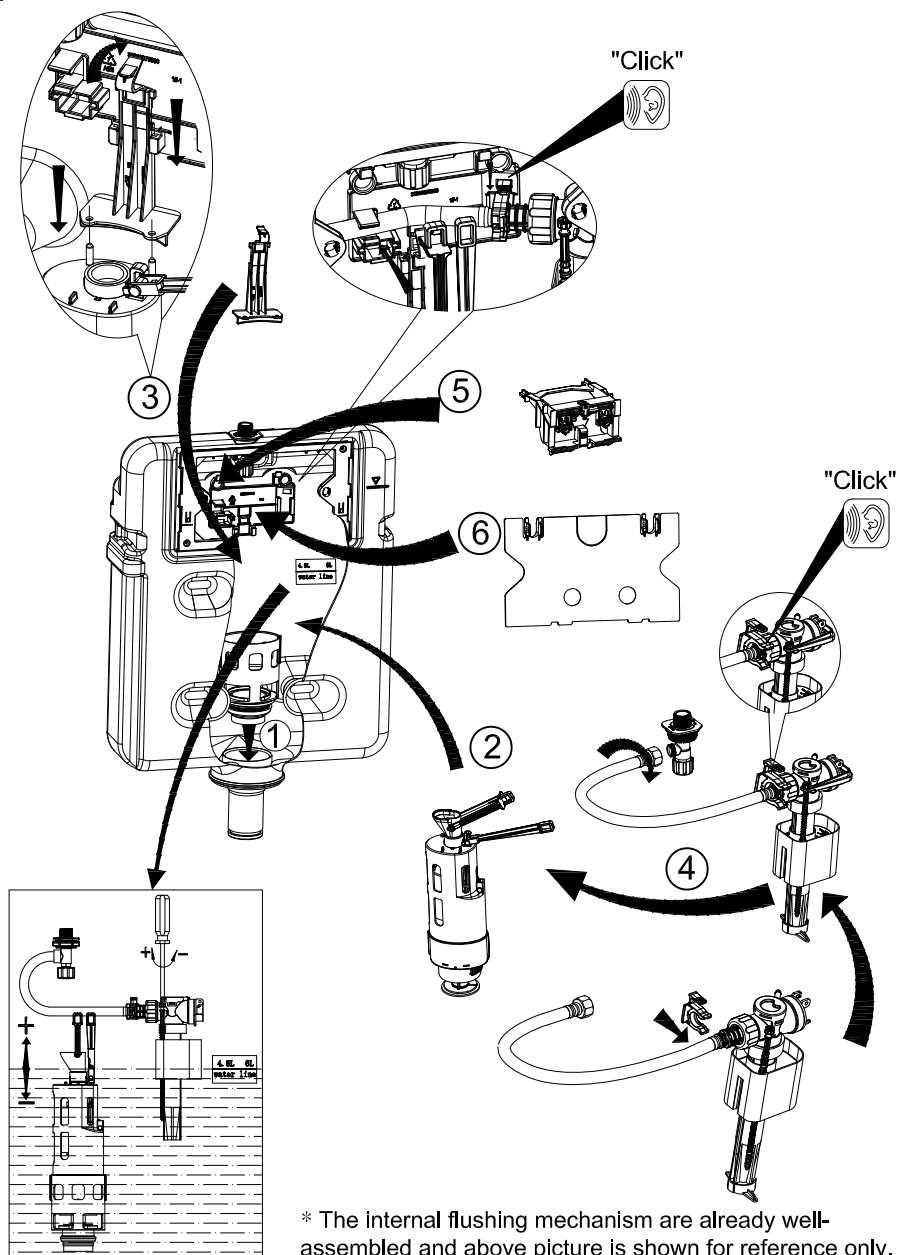
先將連接管插入到排水彎管，再將直管插入到座便器。



Install the toilet.
安裝座便器



Lock the toilet.
鎖定座便器。



* The internal flushing mechanism are already well-assembled and above picture is shown for reference only.

* 水箱配件出廠時已安裝好,以上圖示提供參考。

WARRANTY

Sheng Tai Brassware Co., Ltd. offer a one-year warranty on all of the Concealed Cistern from date of purchasing. The warranty covers any defect in material and workmanship during normal residential use. The following conditions of defect are charged for maintaining.

- Damage caused by accident, misuse, improper care and cleaning.
- Improper using or installation.
- Defects because of the external factors, such as erodent environment (ex. Seashore or mineral spring.), animal bites or dead body remains in product etc.
- Defect because of sand or impurity stuck in Concealed Cistern water way.
- Using water not adhered to the regulations of national standard.
- Deficiency caused by freeze.
- Not showing this warranty card.
- Not filling out in the blank of name of customer, date of purchase, cost of purchase, company of installation (retail store) and stamp on warranty card.
- Sheng Tai Brassware Co., Ltd. is not responsible for labor charges, installation, or other incidental or consequential costs.

勝泰衛材股份有限公司提供所有的隱藏式水箱，從購買之日起一年保固。保固範圍包括在一般住宅正常使用的期間，發現產品有任何材質和加工上的瑕疵。如瑕疵有下列情形，將收取維修費用。

- 因意外事故、不當操作使用，不當的保養維護和清洗所造成的損害。
- 不當使用或安裝。
- 外在因素造成產品的瑕疵，如易造成侵蝕的環境（如濱海或溫泉地區）、動物嚙咬或屍體存在於產品內造成的損壞。
- 因砂子或雜質卡住水路造成的損壞。
- 沒有依循國家標準的規定使用水源造成的損壞。
- 因冰凍造成的水量不足。
- 未出示此保固卡。
- 未在空白處填寫客戶名稱，購買日期，購買成本，安裝公司（零售商店），及保證卡上未蓋章。
- 勝泰衛材股份有限公司不負責工人費用，安裝，或其他附帶或間接產生的費用。

Customer	Name		Tel	
	Address			
Product	Serial No.		Name	
	Warranty	one year from date of purchase.		
Purchase place	Store		Tel	
	Address			
Purchase Date				
Purchase Price				

JUSTIME
www.justime.com

SHENG TAI BRASSWARE CO., LTD.

No.99 Sec.3 Chang Tsao Rd. Ho Me, Chang Hua, Taiwan
508 台灣彰化縣和美鎮彰草路3段99號
TEL: +886-4-7629971~4
FAX: +886-4-7526980
E-mail: shengtai@ms10.hinet.net
Facebook: www.facebook.com/JUSTIME